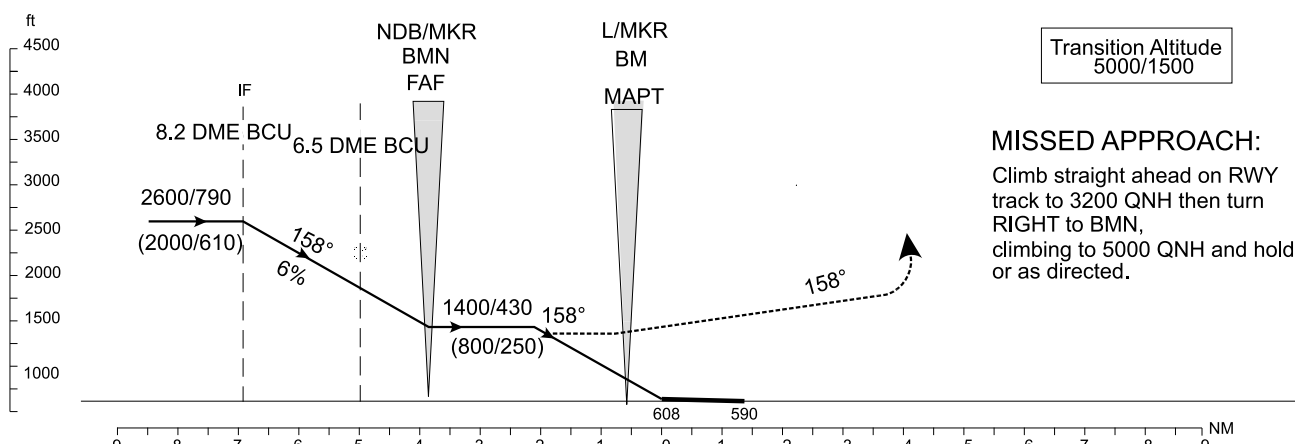
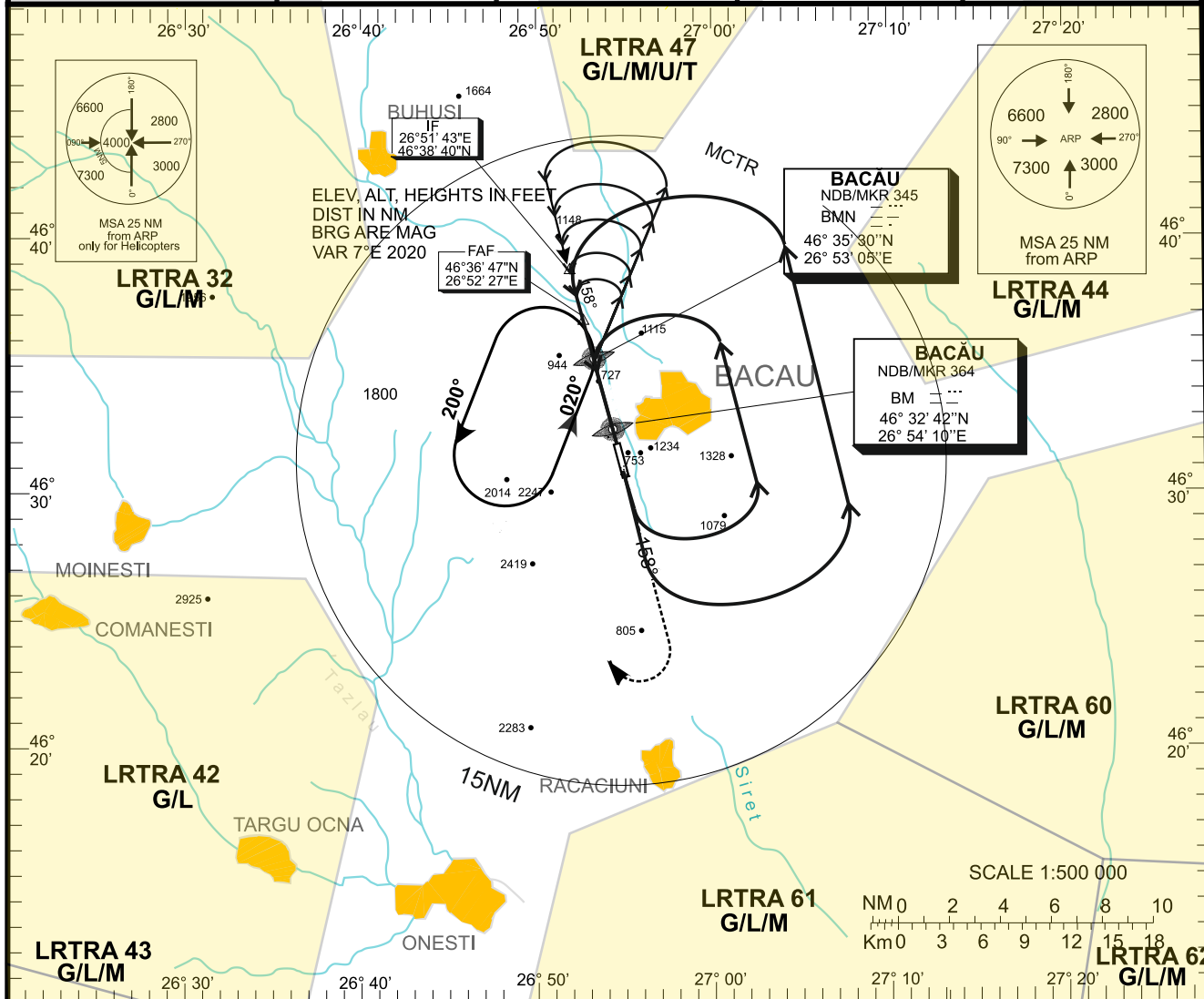


**INSTRUMENT APPROACH CHART**

**AERODROME ELEV. 608 ft**  
HEIGHTS RELATED TO  
THR RWY 16 - ELEV 608 ft

**BACAU / Bacau (LRBC)**  
**NDB CAT A/B/C/D/H**  
**RWY 16**

<b>MAPP</b> 124.750(P)/282.675(A)	<b>MTWR</b> 131.400(P)/122.100(A)	<b>GND</b> 133.700(P)/122.100(A)		
<b>PAR</b> 124.750(P)/123.300(A)	<b>APP COURSE</b> 158	<b>NDB BC 426 B 520</b> <b>BMN 345 BM 364</b>	<b>TDZE</b> 607 ft	<b>LDA</b> 8200 ft



CAT	NDB		CIRCLE TO LAND	
	MDA/MDH	VIS	MDA/MDH	VIS
A / H	1400(430)/753(230)	1200	1630(500)/1023(310)	1500
B	1400(430)/753(230)	1400	1630(500)/1023(310)	1600
C	1400(430)/753(230)	1400	2640(800)/2033(620)	2400
D	1400(430)/753(230)	1800	2820(860)/2213(670)	3600

	kts	70	90	100	120	140	160
FAF-MAPT 6.9 NM	min:s	5:55	4:36	4:08	3:27	2:57	2:35
Rate of descent	ft/min	372	478	531	637	743	849

BACĂU / Bacău (LRBC)  
NDB RWY 16

AERONAUTICAL DATA TABULATION

NDB approach to RWY 16	
Fix/Point	Coordinates
IF	46°38'40.3"N 026°51'42.8"E
FAF-BMN NDB	46°35'30.0"N 026°53'05.0"E
BM LM (MAPT)	46°36'42.0"N 026°54'10.0"E
THR RWY 16	46°31'57.74"N 026°54'21.36"E